

DAINGAI
COCHINCHINE

Daingai's type E2 postmark evolved from having 12 dashes in the inner circle to having 11 dashes in the inner circle.



POSTMARK TYPE: E2
PERIOD OF USE: 1891-1919



POSTAL MARKINGS

DAINGAI COCHINCHINE 11 DEC 11

REVERSE

SAIGON-CENTRAL COCHINCHINE 12 DEC 11

SINGAPORE 16 DEC 1911

KOTTAIYUR RAMNAD 29 DEC. 11

DAU-TIENG COCHINCHINE

The only postmark that used the hyphenated "DAU-TIENG" spelling was in the type G1 format. This example from 1938 is the earliest known example of Dau-Tieng's type G1 postmark.



POSTMARK TYPE: G1
PERIOD OF USE: 1938-43



POSTAL MARKINGS

DAU-TIENG COCHINCHINE 5-8 38
framed Saigon-Marseille routing instruction

REVERSE

THUDAUMOT COCHINCHINE 5-8 38
ST. HEAND LOIRE 12-8 38

DUCHOA
COCHINCHINE

The post office at Duchoa began operations in 1915 and closed in 1945. Its unusual type F2(ch) postmark is only known from a single year, 1922.



POSTMARK TYPE: F2(ch)
PERIOD OF USE: 1922



POSTAL MARKINGS
DUCHOA COCHINCHINE 25 NOV 22
REVERSE
CHOLON COCHINCHINE 25-11 22
SAIGON-CENTRAL COCHINCHINE 25-11 22
HANOI TONKIN 4-12 22

DUONG-DONG COCHINCHINE

Located on the island of Phuquoc, Duong-Dong operated from 1915 through 1945. Duong-Dong 's last known postmark was a type G device.



POSTMARK TYPE: G
PERIOD OF USE: 1933-45



POSTAL MARKINGS

DUONG-DONG COCHINCHINE 3-2 41

registration label

cancel's resealing tape and signature handstamp (Hong Kong)

REVERSE

SAIGON-CENTRAL COCHINCHINE 7-2 41

MONTPELLIER HERAULT 2-4 41

GIADINH
COCHINCHINE

A post office was established at Giadinh in 1883. The first recorded postmark for this provincial capital was in the type E2 format.



POSTMARK TYPE: E2
PERIOD OF USE: 1892-1919



POSTAL MARKINGS
GIADINH COCHINCHINE 3 () 06

GIADINH
COCHINCHINE

The Giadinh post office's use of the type E2(ch) postmark overlapped the longer-lived type E2 postmark.



POSTMARK TYPE: E2(ch)
PERIOD OF USE: 1914-27

POSTAL MARKINGS
GIADINH COCHINCHINE 29-9 24
framed R with manuscript registration number

GIADINH
COCHINCHINE

Giadinh's type G postmark saw service for two decades. It was replaced by the Type V1 postmark in 1949.



POSTMARK TYPE: G
PERIOD OF USE: 1926-49



POSTAL MARKINGS

GIADINH COCHINCHINE 30-5 38
registration label

REVERSE

SAIGON-CENTRAL COCHINCHINE 30-5 38
MADURA-F 8 JUN. 38
ATTANGUDI 9 JUN 38

GIADINH COCHINCHINE

Giadinh's post office used the type G1 postmark through the World War II years. It was first put into service in 1938.



POSTMARK TYPE: G1
PERIOD OF USE: 1938-45



POSTAL MARKINGS
GIADINH COCHINCHINE 21-9 38
REVERSE
SAIGON-CENTRAL COCHINCHINE 21-9 38

GIADINH
COCHINCHINE

The post office at Giadinh employed the type V1 postmark for three years. It was last used in 1951.



POSTMARK TYPE : V1
PERIOD F USE: 1949-51



POSTAL MARKINGS
GIADINH COCHINCHINE 6-7 1951
REVERSE
DALAT PLATEAUX INDOCHINOIS 7-7 1951

GIANG-THANH
COCHINCHINE

The Giang-Thanh post office was in operation from 1907-32 and 1940-45. Its first postmark was a type E2 device and this example is the earliest known use from 1910.



POSTMARK TYPE: E2
PERIOD OF USE: 1910-25



POSTAL MARKINGS

GIANG-THANH COCHINCHINE 16 AOUT 10

REVERSE

CHAUDOC COCHINCHINE 17 AOUT 10
SAIGON-CENTRAL COCHINCHINE 19 AOUT 10

GOCONG
COCHINCHINE

Gocong was a provincial capital. Its type E2 postmark was in use for two decades.



POSTMARK TYPE: E2
PERIOD OF USE: 1891-1911



POSTAL MARKINGS
GOCONG COCHINCHINE 20 MAI 01

GOCONG
COCHINCHINE

Gocong replaced its type E2 postmark with the type E2(ch) postmark, which identified the month by numerals rather than an abbreviation. It remained in service for a decade and a half.



POSTMARK TYPE: E2(ch)
PERIOD OF USE: 1913-27



POSTAL MARKINGS
GOCONG COCHINCHINE 6-11 23

GOCONG
COCHINCHINE

The Gocong post office replaced its type E2 postmarks with the type G postmark which remained in service for nearly a quarter of a century.



POSTMARK TYPE: G
PERIOD OF USE: 1925-49



POSTAL MARKINGS
GOCONG COCHINCHINE 5-9 35
registration label
REVERSE
CHAPELLE-MONTLIGEON ORNE 5-10 35

GOCONG SUD VIET-NAM

The first year of use of Gocong's type V1 postmark was 1950. The V1 device remained in use until 1952, the year that Indochina's stamps were demonetized.



POSTMARK TYPE: V1
PERIOD OF USE: 1950-52



POSTAL MARKINGS
GOCONG SUD VIET-NAM 17-2 1950

GODAUHA COCHINCHINE

Godauha had a rural post office from 16 April 1932 to 1 July 1940, when it opened its secondary post office. Godauha's only known postmark is in the type G1 format.



POSTMARK TYPE: G1
PERIOD OF USE: 1927-48



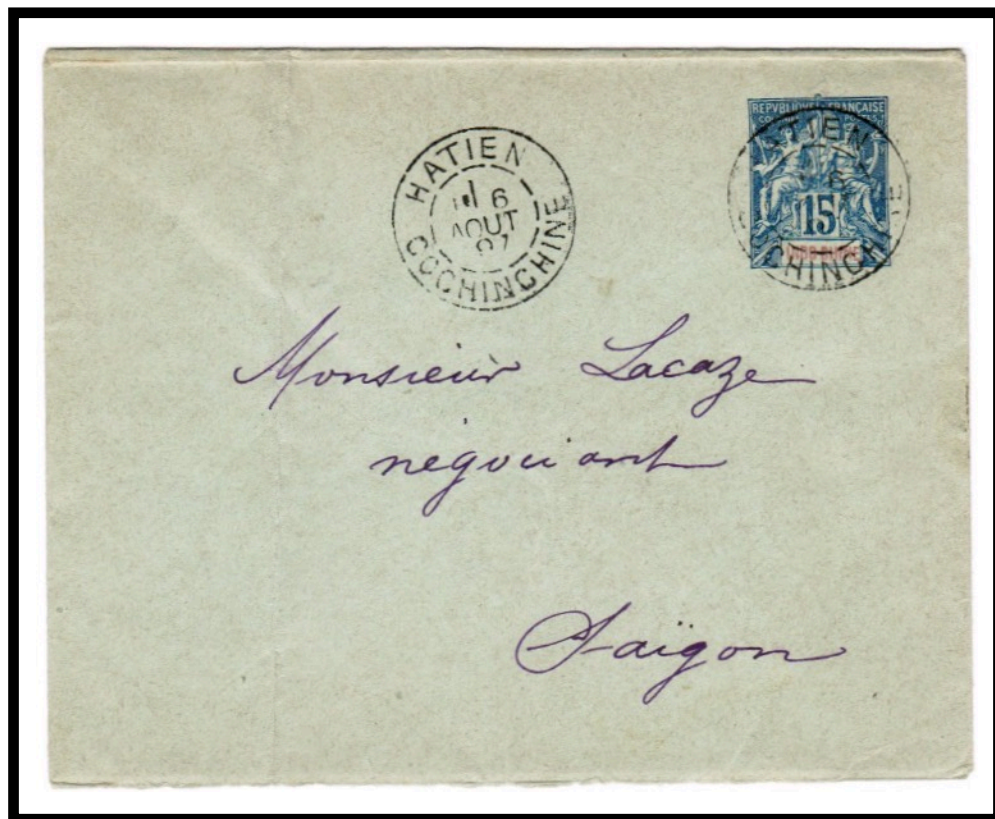
POSTAL MARKINGS
GODAUHA COCHINCHINE 17-12 48
registration label
REVERSE
SAIGON R.P. COCHINCHINE 18-12 48

HATIEN COCHINCHINE

Hatien was a provincial capital. Haitian's type E2 postmark was in service for two decades.



POSTMARK TYPE: E2
PERIOD OF USE: 1887-1908



POSTAL MARKINGS
HATIEN COCHINCHINE 6 AOUT 97
REVERSE
SAIGON-CENTRAL COCHINCHINE 8 AOUT 97

HATIEN
COCHINCHINE

Hatien's E2(ch) postmark replaced its E2 postmark, which had served the post office for two decades. The E2(ch) postmark remained in service for a decade.



POSTMARK TYPE: E2(ch)
PERIOD OF USE: 1914-25



POSTAL MARKINGS
HATIEN COCHINCHINE 7-1 24
REVERSE
SAIGON-CENTRAL COCHINCHINE 9-1 24
HANOI TONKIN 15-1 24

HATIEN COCHINCHINE

The Hatien post office employed the type G postmark until it was replaced by the type V1 postmark. The last year of recorded use for the type G postmark was 1949.



POSTMARK TYPE: G
PERIOD OF USE: 1927-49



POSTAL MARKINGS
HATIEN COCHINCHINE 12-4 49

HATIEN
SUD VIET-NAM

Hatien's final postmark that was used to cancel Indochinese postage stamps was the type V1 device, introduced in 1950. It remained in service only till the following year.



POSTMARK TYPE: V1
PERIOD OF USE: 1950-51



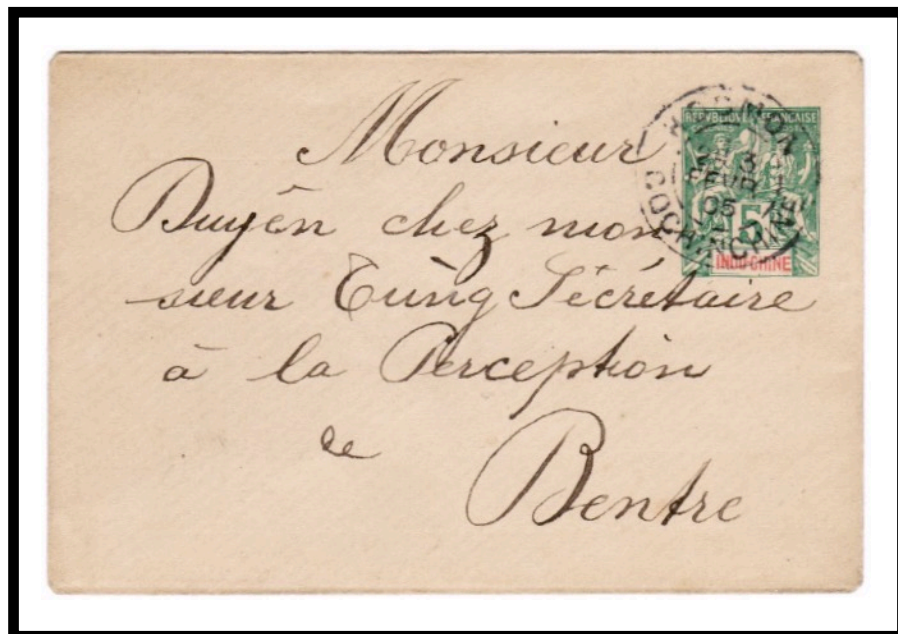
POSTAL MARKINGS
HATIEU SUD VIET-NAM 16-9 1950

HOCMON COCHINCHINE

The Hocmon post office operated from 1882 to about 1954. Hocmon's first recorded postmark was the type E2 design. This example is the earliest known use of the type E2 postmark.



POSTMARK TYPE: E2
PERIOD OF USE: 1905-08



POSTAL MARKINGS
HOCMON COCHINCHINE 3 FEVR 05

HOCMON
COCHINCHINE

The first year of recorded use of Hocmon's type F2 postmark was 1921.



POSTMARK TYPE: F2
PERIOD OF USE: 1921-27



POSTAL MARKINGS
HOCMON COCHINCHINE 14 DEC 21
REVERSE
SAIGON-CENTRAL COCHINCHINE 28 DEC 21

HOCMON
COCHINCHINE

The last reported postmark for Hocmon was a type G device.



POSTMARK TYPE: G
PERIOD OF USE: 1930-45



POSTAL MARKINGS
HOCMON COCHINCHINE 23-10 31

HONQUAN
COCHINCHINE

The final year of use of Honquan's type E2 postmark was 1918. The type E2 postmark had been in service for a decade at Honquan.



POSTMARK TYPE: E2
PERIOD OF USE: 1909-18



POSTAL MARKINGS

HONQUAN COCHINCHINE 25 NOV 18
framed R with manuscript registration number

REVERSE

slogan handstamp
CLERMONT-FERRAND PUY DE DOME 30-12 18

HONQUAN
COCHINCHINE

Like most other towns, Honquan adopted the type G style postmarks in the late 1920s and used them well into the 1940s.



POSTMARK TYPE: G
PERIOD F USE: 1928-45



POSTAL MARKINGS
HONQUAN COCHINCHINE 1-4 38

HON-QUAN COCHINCHINE

The last year of the short-lived Hon-Quan postmark was 1949. Type V1 postmarks that substituted "SUD VIET-NAM" for "COCHINCHINE" replaced the typw G postmarks.



POSTMARK TYPE: G
PERIOD OF USE: 1948-49



POSTAL MARKINGS

HON-QUAN COCHINCHINE 19-5 1949

REVERSE

CONSTANTINE R.P. CONSTANTINE 29 AOUT 49

HON-QUAN COCHINCHINE

The only postmark that ever used the hyphenated "HON-QUAN" spelling was a type G device. It is first known from 1948.



POSTMARK TYPE: V1
PERIOD OF USE: 1948-49



POSTAL MARKINGS
HON-QUAN COCHINCHINE 13-8 48
REVERSE
SAIGON R.P. COCHINCHINE 16-8 48